

## Grammatical approach to describing skin lesions: framework and assessment

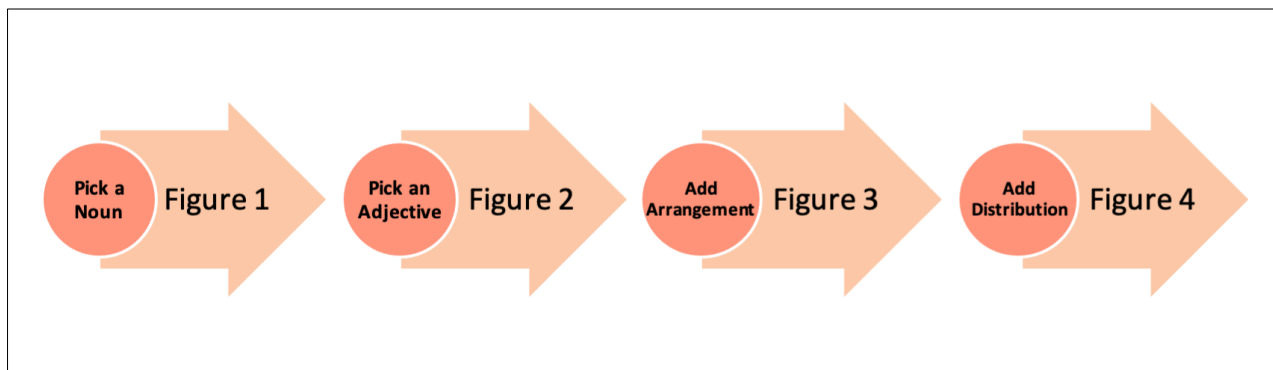
Adam Cardenas,<sup>1</sup> Emilie A. Foltz,<sup>2</sup> Simi Cadmus,<sup>3</sup> Dayna Diven<sup>4</sup>

<sup>1</sup>University of Texas, Dell Medical School, Austin (TX); <sup>2</sup>Washington State University Elson S. Floyd College of Medicine, Spokane (WA); <sup>3</sup>Central Austin Dermatology & Aesthetics, Austin (TX); <sup>4</sup>Division of Dermatology, University of Texas, Dell Medical School, Austin (TX), USA

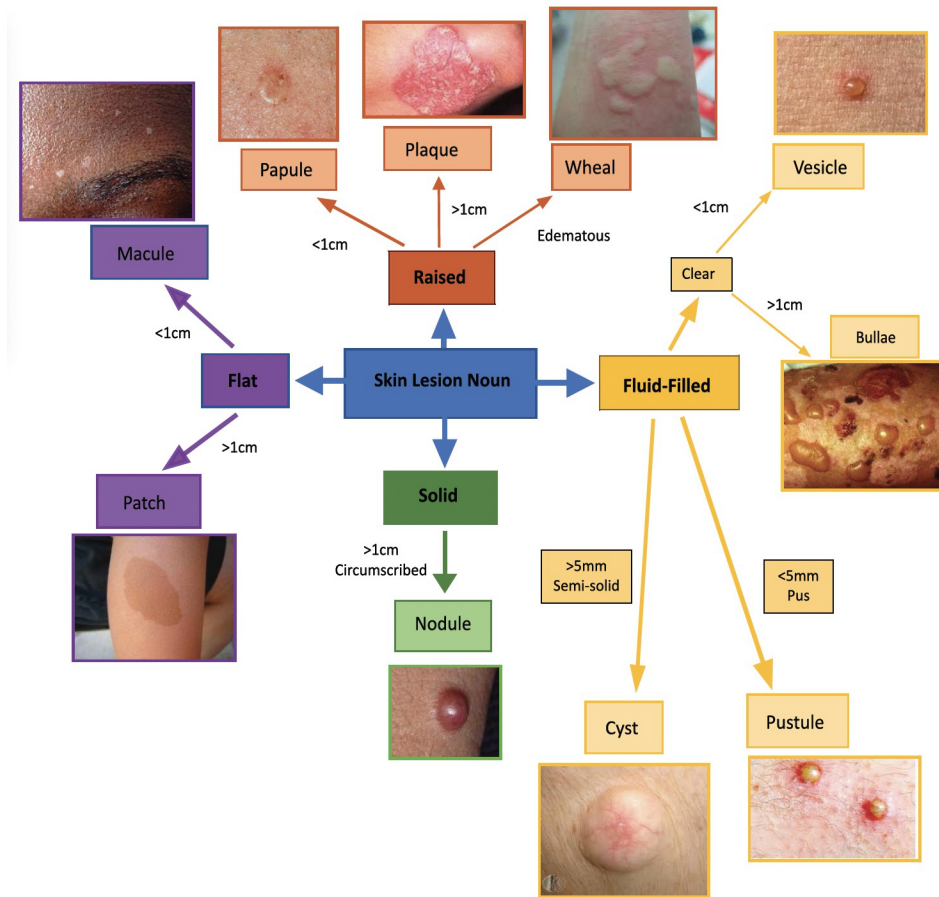
### SUPPLEMENTARY MATERIAL

**Appendix 1.** Learning materials offered to survey participants.

**Process Figure:** general approach broken down into simplified components.



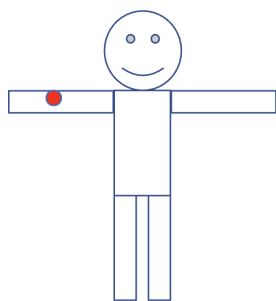
**Noun:** selecting the foundation of a lesion.



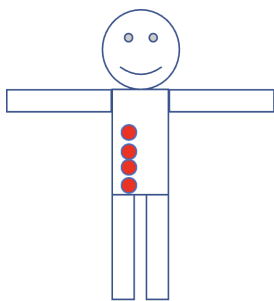
**Adjective:** describing key characteristics of a lesion.

Shape	Color	Surface Change
<ul style="list-style-type: none"> <li>•Round/circular</li> <li>•Oval</li> <li>•Annular - ring shaped +/- central clearing</li> <li>•Arcuate - arc</li> <li>•Targetoid</li> <li>•Umbilicated</li> <li>•Flat-topped</li> </ul>	<ul style="list-style-type: none"> <li>•Pale pink</li> <li>•Pink</li> <li>•Red - erythematous</li> <li>•Purple/violaceous</li> <li>•Blue</li> <li>•Yellow</li> <li>•Black</li> <li>•Brown/hyperpigmented</li> <li>•White/hypopigmented/depigmented</li> <li>•Shiny</li> </ul>	<ul style="list-style-type: none"> <li>•Scale - thick or thin</li> <li>•Crust - scabbed</li> <li>•Lichenification - thickened with accentuated skin lines</li> <li>•Excoriation - scratched</li> <li>•Erosion - superficial</li> <li>•Ulcer - deep</li> <li>•Eschar - dead tissue</li> <li>•Atrophy - thin</li> <li>•Character - Soft, Firm, Well-demarcated</li> </ul>

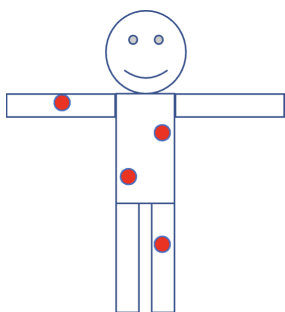
**Arrangement:** describing skin lesions' location in relation to each other.



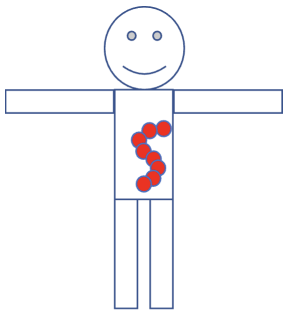
Isolated/Localized



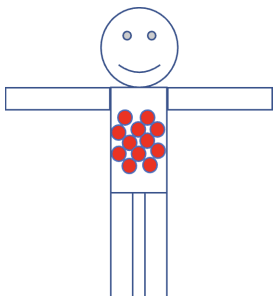
Linear



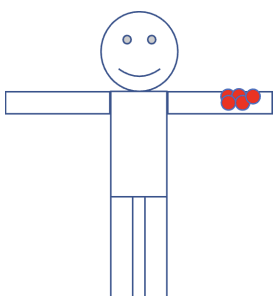
Scattered



Serpiginous

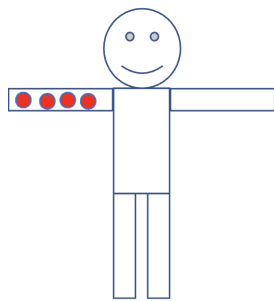


Reticular (net-like)

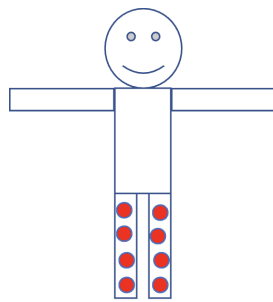


Grouped/Clustered

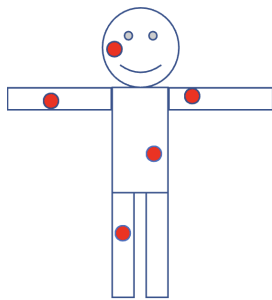
**Distribution:** describing skin lesion(s) location on the entire body.



Unilateral



Bilateral



Generalized

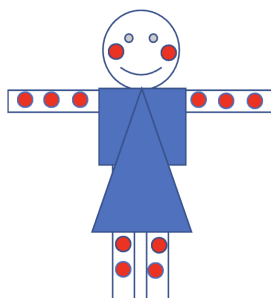
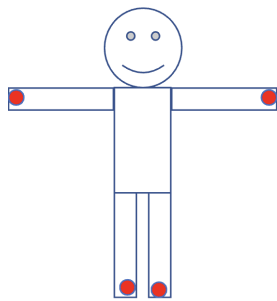
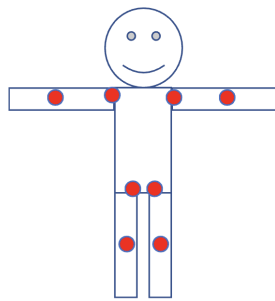


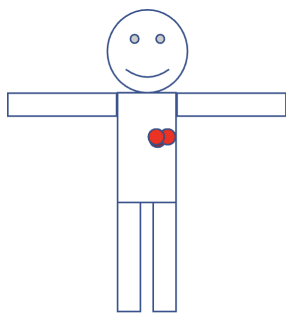
Photo-distributed



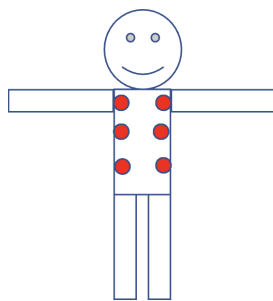
Acral



Flexural



Dermatomal



Symmetric