

S-MAPA: bridging the gap in psoriasis severity assessment

Trang Thi Thuy Vu,^{1,2} Chuyen Thi Hong Nguyen,¹ Trung The Van¹

¹Department of Dermatology, University of Medicine and Pharmacy at Chi Minh City; ²Department of Dermatology, Tam Anh Hospital, Ho Chi Minh City, Vietnam

Abstract

The Psoriasis Area and Severity Index (PASI) is widely used to evaluate psoriatic disease activity in clinical settings; however, its limitations hinder its practicality in routine use. The Simple-Measure for Assessing Psoriasis Severity (S-MAPA) has emerged as a promising tool addressing these limitations, providing a more feasible approach for assessing disease severity. This study aimed to evaluate the S-MAPA as a sensitive and practical alternative to existing instruments for measuring psoriasis severity. Patients with psoriasis were assessed using body surface area (BSA), the Physician's Global Assessment (PGA), S-MAPA, PASI, and Dermatology Life Quality Index (DLQI). Plasma high-sensitivity C-reactive protein (hs-CRP) levels were also measured. Spearman's correlation analysis compared the relationships between these assessment tools and hs-CRP levels. In total, 100 assessments were conducted between January and July 2019. The S-MAPA score and PASI showed a strong positive correlation with disease severity ($r=0.9315$, $p<0.01$). Both the S-MAPA score exhibited comparable correlations with hs-CRP levels ($r=0.5299$ vs. 0.5316) and the DLQI ($r=0.2533$ vs. 0.2641). The S-MAPA score demonstrated stronger correlations with the PASI, DLQI, and hs-CRP level than with BSA or the PGA score. The area under the receiver operating characteristic curve for the S-MAPA was 0.9787, with an optimal cut-off value of 138 for predicting severe psoriasis (sensitivity, 92.59%; specificity, 95.89%). Based on our findings, the S-MAPA is a reliable and practical alternative for assessing the severity of psoriasis in clinical practice, offering advantages over conventional measures.

Key words: S-MAPA; PASI; PGAXBSA; psoriasis; psoriasis severity measurement.

Correspondence: Chuyen Thi Hong Nguyen, M.D., Ph.D., Department of Dermatology, University of Medicine and Pharmacy at Ho Chi Minh City, 217 Hong Bang Street, Ward Cho Lon Ho Chi Minh City, Vietnam. Tel.: +84-28.3856 6154. Fax: +84-28.3855 2304. E-mail: chuyennguyen@ump.edu.vn

Introduction

Psoriasis is a chronic, relapsing skin condition that significantly affects patients' quality of life, physical functioning, and work productivity. Accurate and consistent assessment of psoriasis severity is crucial for clinical management and research. Various tools have been developed to measure psoriasis severity. However, none have fully met the criteria for validity and practicality.^{1,2}

The Psoriasis Area and Severity Index (PASI) has long been the gold standard for evaluating psoriasis severity. However, it is less suited for routine clinical practice because of its complex and time-intensive nature. The PASI requires a detailed assessment of body surface area (BSA), redness, thickness, and scaling across four distinct body regions, making it cumbersome for everyday use. Additionally, the PASI has shown limitations in detecting subtle changes in patients with milder forms of psoriasis, reducing sensitivity.^{3,4}

In contrast, the Simple-Measure for Assessing Psoriasis Severity for Assessing Psoriasis Severity (S-MAPA) offers a streamlined alternative by calculating the product of the mean Physician's Global Assessment (PGA) score and the percentage of BSA involvement.⁵ The use of the mean PGA score in this formula reflects an averaged clinical judgment of the overall severity of psoriatic lesions – typically considering erythema, scaling, and

induration – across all affected areas. By integrating both the qualitative assessment of plaque characteristics (*via* PGA) and the quantitative extent of involvement (*via* BSA), the S-MAPA provides a simplified yet comprehensive measure of disease severity that is easier to apply in both clinical and research settings.

Although previous studies have demonstrated a strong correlation between S-MAPA and PASI, validating its potential utility as a surrogate marker,⁶ remains a lack of objective evidence linking S-MAPA to systemic markers of inflammation. In this study, we aimed to investigate the association between S-MAPA scores and high-sensitivity C-reactive protein (hs-CRP), a well-established biomarker of systemic inflammation in psoriasis.⁷ This analysis may offer further insights into the validity of S-MAPA as an alternative disease severity measure in both clinical practice and research.

Materials and Methods

This cross-sectional study enrolled 100 participants diagnosed with plaque psoriasis who visited the Ho Chi Minh City Hospital of Dermatology and Venereology (Vietnam) between January 2019 and July 2019. The study population included 56 male and 44 female patients, aged 17 to 76 years (mean age: 47.12±15.19

years). Eligible participants were adults aged 16 years and older with a clinical diagnosis of psoriasis confirmed by dermatologists. Exclusion criteria included evidence of acute or chronic infections, autoimmune diseases, hepatic or renal failure, symptoms or signs of arthritis (including psoriatic arthritis), a history of active malignancy, recent surgery or bone fractures within the previous two months, and the use of anti-inflammatory medications. All participants were informed of the study's objectives, and written informed consent was obtained prior to enrollment. Detailed demographic and clinical information were collected, including age, sex, occupation, disease duration, and time of disease onset. A thorough physical examination was performed to assess psoriasis severity through multiple validated tools. Disease extent was evaluated using BSA involvement, while lesion severity was assessed using the PGA scale. The PGA utilized in this study was a 5-point scale, ranging from 0 (clear) to 4 (severe), based on the overall assessment of erythema, induration, and scaling of psoriatic plaques.^{8,9} The S-MAPA was then calculated by multiplying the mean PGA score by the percentage of BSA involvement. In addition, psoriasis severity was measured using PASI for comparison purposes.¹⁰ The impact of psoriasis on patients' quality of life was evaluated using the Dermatology Life Quality Index (DLQI).^{11,12} Following clinical assessment and interviews, venous blood samples were collected from each participant to measure hs-CRP levels, a biomarker of systemic inflammation.¹³

The study protocol was reviewed and approved by the Human Research Ethics Committee of Ho Chi Minh City University of Medicine and Pharmacy (approval number 295/DHYD-HĐĐĐ).

Statistical analysis

Data analysis was performed using STATA software (version 13.1, StataCorp LLC, TX 77845, USA). Data were summarized as means (\pm standard deviation) and medians (interquartile range) for those with normal and non-normal distributions, respectively. The relationships between all assessment instruments were evaluated using Spearman's correlation. Statistical significance was set at $p < 0.05$. Spearman correlation coefficients were interpreted as follows: 0.1-0.3, 0.3-0.5, 0.5-0.7, 0.7-0.9, and ≥ 0.9 indicated very low, low, moderate, high, and very high correlation, respectively.¹⁴ A receiver operating characteristic (ROC) curve was constructed to evaluate the ability of the S-MAPA score to discriminate patients with severe psoriasis, using PASI ≥ 20 as the reference standard. The area under the curve (AUC) was calculated to assess the over-

all diagnostic performance. The optimal cut-off point for the S-MAPA was determined by maximizing Youden's index, which identifies the threshold that optimizes the trade-off between sensitivity and specificity.

Results

Data from 100 patients diagnosed with plaque psoriasis were analyzed. Of these, 56% were male. The mean age at study entry was 47.1 ± 15.19 years, ranging from 17 to 76 years. The median disease duration was 10 years (interquartile range: 5-18 years). The median S-MAPA score, BSA, PGA score, PASI, and DLQI are summarized in Table 1. Spearman rank correlation analysis demonstrated a significant and very strong association between the S-MAPA score and PASI ($r = 0.93$, $p < 0.01$). Notably, the S-MAPA score showed a stronger correlation with the PASI than with either BSA or the PGA score alone (S-MAPA score, $r = 0.9315$; PGA score, $r = 0.449$; BSA, $r = 0.836$). The scatter plots in Figure 1 illustrate the relationship between the S-MAPA score with PASI, BSA, and PGA scores. However, the S-MAPA score, PASI, PGA score,

Table 1. Demographics and disease characteristics of study participants.

Characteristics	Results (n=100)
Age (years), mean \pm SD	47.12 \pm 15.19
Male, n (%)	56 (56%)
Duration of psoriasis (years), median (IQR)	10 (5-18)
Onset time (years), mean \pm SD	34.68 \pm 15.66
PASI, median (IQR)	14.4 (8.75-20.8)
Affected BSA (%), median (IQR)	32.75 (12-61.5)
PGA, median (IQR)	2.33 (1.67-2.69)
S-MAPA, median (IQR)	72.83 (31.58-144.17)
DLQI, median (IQR)	11 (4-14.5)
hs-CRP (mg/L), median (IQR)	2.62 (0.91-9.59)

SD, standard deviation; IQR, interquartile range; PASI, Psoriasis Area and Severity Index; BSA, body surface area; PGA, Physician's Global Assessment; S-MAPA, Simple-Measure for Assessing Psoriasis Severity; DLQI, Dermatology Life Quality Index; hs-CRP, high-sensitivity C-reactive protein.

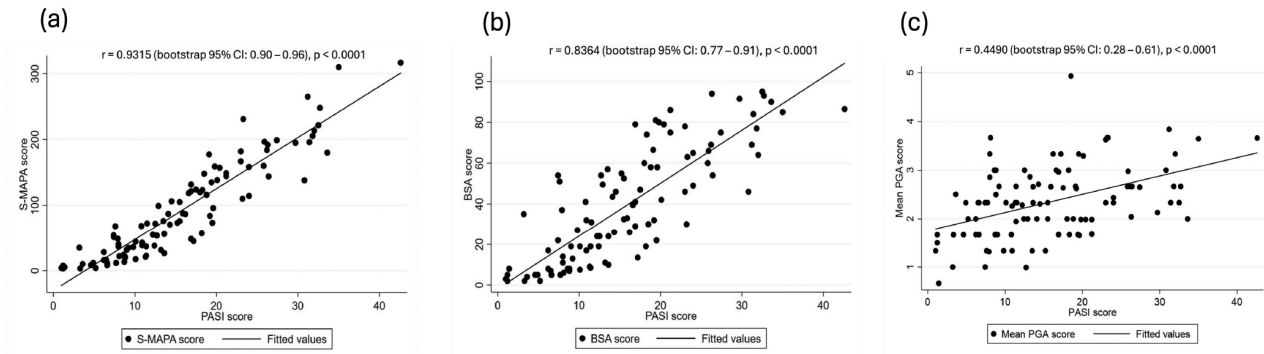


Figure 1. The correlation between PASI and S-MAPA, BSA, and PGA scores. The PASI is correlated with **a**) S-MAPA score ($r = 0.9315$; $p < 0.0001$); **b**) BSA ($r = 0.8364$, $p < 0.0001$); and **c**) PGA score ($r = 0.4490$, $p < 0.0001$).

and BSA were weakly correlated with the DLQI ($r=0.2533$, 0.2641 , 0.2391 , and 0.1505 , respectively; Table 2). In terms of biomarker associations, both the S-MAPA score and PASI were moderately correlated with hs-CRP levels, whereas the PGA score and BSA exhibited weaker correlations with hs-CRP levels (Table 2).

The ability of S-MAPA to detect severe psoriasis, as defined by PASI ≥ 20 , was evaluated using a ROC curve (Figure 2). The ROC analysis demonstrated that the S-MAPA score was a strong predictor of severe psoriasis, with an AUC of 0.9787 (95% confidence interval (CI): 0.96-1.00), indicating excellent discriminative ability. Using Youden’s index to determine the optimal cut-off point, a S-MAPA value of 138 was found to be optimal for predicting severe psoriasis. At this threshold, the sensitivity was 92.59% (95% CI: 75.7-99.1), and the specificity was 95.89% (95% CI: 88.5-99.1).

Discussion

In psoriasis, the initiation of therapy and monitoring of treatment effectiveness rely heavily on accurate assessment of disease severity. Therefore, evaluation of psoriasis severity is essential in both clinical practice and research. Between 1997 and 2000, 171 randomized clinical trials of psoriasis employed 44 different scoring systems to measure severity.¹⁵ Among these, the PASI, PGA, and BSA were the most commonly used tools. In 2013, Walsh *et al.* introduced the S-MAPA – a metric that combines the PGA and BSA – as a more practical and efficient alternative capable of capturing both the extent and characteristics of psoriasis plaques.⁵

This study aimed to evaluate the efficacy of the S-MAPA as an alternative to the PASI and other instruments for measuring psoriasis severity. Our findings align with and build upon previous research validating the S-MAPA as a reliable severity assessment tool.^{5,16,17} In our analysis, the S-MAPA and PASI demonstrated a very strong correlation ($r=0.93$, $p<0.01$). Consistent with the results reported by Walsh *et al.*,⁵ our data suggest that the S-MAPA performs similarly to the PASI in estimating psoriasis severity. Furthermore, the S-MAPA was more sensitive than the PASI in patients with low BSA. For example, Walsh *et al.* highlighted a case involving two patients: one with erythema, induration, and desquamation scores of 3 each and a BSA involvement of 1%, and another with similar lesions but a BSA involvement of 9%. Although both patients had a PASI of 9 because their percentage of BSA involvement was $<10\%$, their S-MAPA scores were 3 and 27, respectively. This discrepancy underscores the insensitivity of the PASI to minor changes in the percentage of BSA involvement, particularly in patients with mild disease, whereas the S-MAPA effectively accounts for these differences. Consequently, the S-MAPA may enable clinicians to assess and monitor treatment responses with greater precision and ease. The role of CRP as a biomarker of psoriasis has been supported by numerous studies. Vanior *et al.* reported that patients with psoriasis exhibit significantly elevated

baseline CRP levels, compared with healthy controls.¹⁸ Similarly, Mallbris *et al.* demonstrated that CRP levels in patients with psoriasis were higher than those in controls and positively correlated with serum cholesterol levels.¹⁹ Asha *et al.* found that 52% of patients with psoriasis had CRP levels >5 mg/L, compared with only 14% of controls ($p<0.05$).²⁰ Kimball *et al.* further observed that mean CRP levels in patients with severe psoriasis were significantly higher than those in patients with mild disease (1.16 ± 0.07 mg/dL vs. 0.63 ± 0.03 mg/dL, $p<0.001$).²¹ Asha *et al.* also noted a correlation between disease severity and CRP levels, with 44% of patients with a PASI >10 having elevated CRP levels, compared with 25% of those with a PASI <10 ($p=0.003$).²⁰ A positive correlation between CRP levels and the PASI has been reported.²²⁻²⁴ CRP, therefore, serves as a valuable biomarker for assessing disease severity and monitoring treatment response. In our study, both the S-MAPA score and PASI exhibited moderate correlations with hs-CRP levels, providing further evidence that the S-MAPA is an effective tool for assessing psoriasis severity. However, the weak correlations among the S-MAPA score, PASI, and DLQI highlight the limitations of the corresponding tools in capturing factors beyond the physical manifestations of psoriasis, such as itching, stinging, and psychological distress, which significantly affect patients’ quality of life.

Although the PGA and BSA are straightforward and widely used in clinical practice, our data demonstrate that the S-MAPA score correlates more strongly with the PASI, DLQI, and hs-CRP levels than with the PGA or BSA alone. This can be attributed to the PGA and BSA failing to provide a comprehensive evaluation of

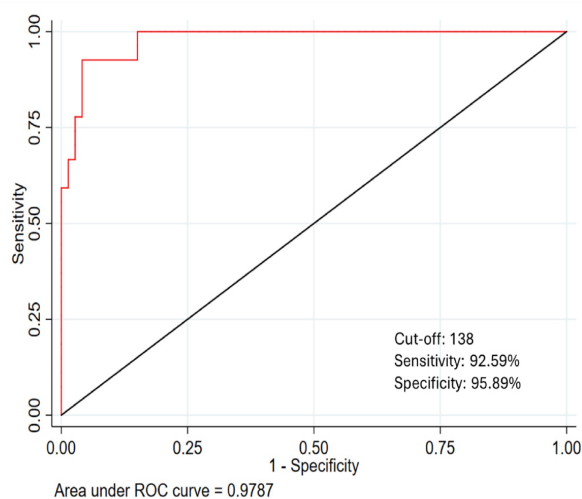


Figure 2. Receiver operating characteristic curve to determine cut-off value of the S-MAPA score for predicting severe psoriasis (PASI ≥ 20).

Table 2. Spearman correlation coefficients between S-MAPA, PASI, BSA, PGA with DLQI and hs-CRP.

Correlation (bootstrap 95% CI)	S-MAPA	PASI	BSA	PGA
DLQI	0.2533 (0.06-0.45)	0.2641 (0.07-0.46)	0.2391 (0.04-0.44)	0.1505 (-0.04-0.34)
hs-CRP	0.5299 (0.36-0.70)	0.5316 (0.37-0.69)	0.4748 (0.30-0.65)	0.2520 (-0.08-0.30)

The correlations between S-MAPA, PASI, and DLQI were weak, with $r=0.25$ and 0.26 , respectively. In contrast, stronger correlations were observed with hs-CRP, showing $r=0.53$ and 0.5316 , respectively. CI, confidence interval; S-MAPA, Simple-Measure for Assessing Psoriasis Severity; PASI, Psoriasis Area and Severity Index; BSA, body surface area; PGA, Physician’s Global Assessment; DLQI, Dermatology Life Quality Index; Hs-CRP, high-sensitivity C-reactive protein.

both the intensity of lesions and the extent of BSA involvement when used separately. By combining these measures, the S-MAPA addresses the limitations of each tool and offers a holistic assessment of disease severity.

A key finding of our study was the high AUC for the S-MAPA (0.9787), which underscores its utility in assessing psoriasis severity. Based on the ROC curve, the optimal S-MAPA threshold for predicting severe psoriasis was 138, with sensitivity and specificity values of 92.59% and 95.89%, respectively. Although the cut-off values for the S-MAPA score have not been established in the literature, this study provides valuable insights into its potential clinical application and highlights the potential of the S-MAPA as a reliable severity assessment tool.

Limitations of the study

The sample size of the study was limited to 100 patients, which may have restricted the generalizability of the findings to a broader population of patients with psoriasis. Furthermore, the study did not evaluate the intra- and interrater reliabilities of the S-MAPA, questioning its consistency and reproducibility across different measurements and evaluators. These highlight the need for further research to address the limitations of this study.

Conclusions

Our findings highlight the S-MAPA as a compelling alternative to the PASI for assessing psoriasis severity. With its ability to quantify disease severity and simplicity of calculation, the S-MAPA is a practical and reliable tool. We recommend the S-MAPA as an effective instrument for measuring psoriasis severity, suitable for use not only in clinical trials but also in routine clinical practice.

References

1. Puzenat E, Bronsard V, Prey S, et al. What are the best outcome measures for assessing plaque psoriasis severity? A systematic review of the literature. *J Eur Acad Dermatol Venereol* 2010;24:10-6.
2. Spuls PI, Lecluse LL, Poulsen M-LN, et al. How good are clinical severity and outcome measures for psoriasis?: quantitative evaluation in a systematic review. *J Invest Dermatol* 2010;130:933-43.
3. Van de Kerkhof P. On the limitations of the psoriasis area and severity index (PASI). *Br J Dermatol* 1992;126:205-6.
4. Walsh JA, Arledge T, Nurminen T, et al. PGA× BSA: a measure of psoriasis severity tested in patients with active psoriatic arthritis and treated with certolizumab pegol. *J Rheumatol* 2018;45:922-8.
5. Walsh JA, McFadden M, Woodcock J, et al. Product of the Physician Global Assessment and body surface area: a simple static measure of psoriasis severity in a longitudinal cohort. *J Am Acad Dermatol* 2013;69:931-7.
6. Chiesa Fuxench ZC, Callis Duffin K, Siegel M, et al. Validity of the Simple-Measure for Assessing Psoriasis Activity (S-MAPA) for objectively evaluating disease severity in patients with plaque psoriasis. *J Am Acad Dermatol* 2015;73:868-70.
7. Boehncke WH. Systemic Inflammation and Cardiovascular Comorbidity in Psoriasis Patients: Causes and Consequences. *Front Immunol* 2018;9:579.
8. Feldman SR, Krueger GG. Psoriasis assessment tools in clinical trials. *Ann Rheum Dis* 2005;64 Suppl 2:ii65-8; discussion ii9-73.
9. Langley RG, Ellis CN. Evaluating psoriasis with Psoriasis Area and Severity Index, Psoriasis Global Assessment, and Lattice System Physician's Global Assessment. *J Am Acad Dermatol* 2004;51:563-9.
10. Carlin CS, Feldman SR, Krueger JG, et al. A 50% reduction in the Psoriasis Area and Severity Index (PASI 50) is a clinically significant endpoint in the assessment of psoriasis. *J Am Acad Dermatol* 2004;50:859-66.
11. Finlay AY, Khan GK. Dermatology Life Quality Index (DLQI) – a simple practical measure for routine clinical use. *Clin Exp Dermatol* 1994;19:210-6.
12. Hongbo Y, Thomas CL, Harrison MA, et al. Translating the science of quality of life into practice: What do dermatology life quality index scores mean? *J Invest Dermatol* 2005;125:659-64.
13. Şener G, İnan Yuksel E, Gökdeniz O, et al. The Relationship of Hematological Parameters and C-reactive Protein (CRP) With Disease Presence, Severity, and Response to Systemic Therapy in Patients With Psoriasis. *Cureus* 2023;15:e43790.
14. Mukaka MM. Statistics corner: A guide to appropriate use of correlation coefficient in medical research. *Malawi Med J* 2012;24:69-71.
15. Naldi L, Svensson A, Diepgen T, et al. Randomized clinical trials for psoriasis 1977-2000: the EDEN survey. *J Invest Dermatol* 2003;120:738-41.
16. Duffin KC, Papp KA, Bagel J, et al. Evaluation of the Physician Global Assessment and Body Surface Area Composite Tool for Assessing Psoriasis Response to Apremilast Therapy: Results from ESTEEM 1 and ESTEEM 2. *J Drugs Dermatol* 2017;16:147-53.
17. Merola JF, Gottlieb AB. Practical assessment of psoriasis clinical severity in both clinical trials and clinical practice settings: a report from the GRAPPA 2016 annual meeting. *J Rheumatol* 2017;44:691-2.
18. Kural BV, Örem A, Çimşit G, et al. Evaluation of the atherogenic tendency of lipids and lipoprotein content and their relationships with oxidant-antioxidant system in patients with psoriasis. *Clin Chim Acta* 2003;328:71-82.
19. Mallbris L, Granath F, Hamsten A, Ståhle M. Psoriasis is associated with lipid abnormalities at the onset of skin disease. *J Am Acad Dermatol* 2006;54:614-21.
20. Vadakayil AR, Dandekeri S, Kambil SM, Ali NM. Role of C-reactive protein as a marker of disease severity and cardiovascular risk in patients with psoriasis. *Indian Dermatol Online J* 2015;6:322.
21. Kimball AB, Wu Y. Cardiovascular disease and classic cardiovascular risk factors in patients with psoriasis. *Int J Dermatol* 2009;48:1147-56.
22. Barrea L, Macchia PE, Tarantino G, et al. Nutrition: A key environmental dietary factor in clinical severity and cardiometabolic risk in psoriatic male patients evaluated by 7-day food-frequency questionnaire. *J Transl Med* 2015;13:1-10.
23. Uaratanawong R, Uaratanawong S, Chunhasewee C, Chawvavanich P. High Sensitivity C-Reactive Protein Level and Psoriasis Severity in Thai Patients. *J Med Assoc Thai* 2016;99:1039-45.
24. Coimbra S, Oliveira H, Reis F, et al. C-reactive protein and leucocyte activation in psoriasis vulgaris according to severity and therapy. *J Eur Acad Dermatol Venereol* 2010;24:789-96.

Received: 19 December 2024; Accepted: 11 April 2025.

Contributions: Trang Thi Thuy Vu: conceptualization, project administration, and writing – original draft; Trung The Van, Chuyen Thi Hong Nguyen: data curation, investigation, methodology, and writing – review and editing. All the authors have read and approved the final version of the manuscript and agreed to be accountable for all aspects of the work.

Conflict of interest: the authors declare that they have no competing interests, and all authors confirm accuracy.

Ethics approval and consent to participate: the study protocol was reviewed and approved by the Human Research Ethics Committee of Ho Chi Minh City University of Medicine and Pharmacy, Vietnam (approval number 295/ĐHYD-HĐĐĐ), in accordance with the Declaration of Helsinki for Ethics and Medical Research. Written consent to participate was obtained from all study participants.

Availability of data and materials: the datasets generated and/or analyzed during the current study are not publicly available but are available upon reasonable request from the corresponding author.

Acknowledgments: we thank all the patients who agreed to take part in our study.

Publisher's note: all claims expressed in this article are solely those of the authors and do not necessarily represent those of their affiliated organizations, or those of the publisher, the editors and the reviewers. Any product that may be evaluated in this article or claim that may be made by its manufacturer is not guaranteed or endorsed by the publisher.

This work is licensed under a Creative Commons Attribution-NonCommercial 4.0 International License (CC BY-NC 4.0).