

## Dermoscopy of kaposiform hemangioendothelioma: a case report

Filomena Barbato,<sup>1</sup> Maria Maddalena Nicoletti,<sup>2</sup> Gaetano Licata,<sup>3</sup> Eugenia Veronica Di Brizzi,<sup>2</sup> Giuseppe Argenziano,<sup>2</sup> Caterina Mariarosaria Giorgio<sup>2</sup>

<sup>1</sup>Department of Pediatric Dermatology, Santobono-Pausilipon Children Hospital, Naples; <sup>2</sup>Dermatology Unit, University of Campania, Naples; <sup>3</sup>Dermatology Unit, San Antonio Abate Hospital, Trapani, Italy

### Abstract

Kaposiform hemangioendothelioma (KHE) is a rare vascular tumor of infancy, characterized by an infiltrative, firm, and ill-defined plaque that may be associated with Kasabach-Merritt phenomenon. While the diagnosis is primarily clinical and histopathological, dermoscopy may provide valuable insights into its microstructural features. We present the case of a newborn with congenital KHE involving the lumbar and right gluteal region, focusing on its dermoscopic characteristics. The lesion exhibited a homogeneous, grayish-blue background with no discernible vascular structures, a feature that may aid in differentiating KHE from other vascular tumors. The findings contribute to the understanding of dermoscopic patterns in KHE, highlighting its potential role in early diagnosis.

**Key words:** dermoscopy; hemangioendothelioma; kaposiform.

Correspondence: Caterina Mariarosaria Giorgio, MD, Dermatology Unit, University of Campania, via Pansini 5, 80131 Naples, Italy.  
E-mail: caterinagiorgio80@gmail.com

### Introduction

Kaposiform hemangioendothelioma (KHE) is a locally aggressive vascular tumor typically presenting at birth or in early infancy. It is characterized by an ill-defined, indurated plaque with a violaceous to erythematous coloration. Unlike infantile hemangiomas, KHE does not undergo spontaneous regression and may be complicated by Kasabach-Merritt phenomenon, a life-threatening consumptive coagulopathy.<sup>1</sup> The diagnosis relies on clinical presentation and histopathology, yet dermoscopy can provide additional, non-invasive insights into its microvascular architecture. While the dermoscopic features of common vascular tumors, such as hemangiomas and vascular malformations, are well described, data on KHE remain scarce. We report a case of congenital KHE in a newborn, with a detailed dermoscopic evaluation to characterize its features.<sup>2</sup>

### Case Report

A full-term male neonate presented at birth with a large, firm, and violaceous plaque involving the lumbar and right gluteal region (Figure 1a). The lesion was indurated upon palpation, non-compressible, and had ill-defined borders that gradually blended into the surrounding skin. Its color varied from erythematous to violaceous, with no superficial ulceration or evidence of rapid postnatal growth. The clinical differential diagnosis included KHE, deep infantile hemangioma, and a vascular malformation. Due to the lesion's infiltrative nature and firm consistency, a dermoscopic

evaluation was performed to assess its microstructural patterns (Figure 1b). The lesion also exhibited fine, white, interwoven filamentous structures across the surface, possibly corresponding to areas of stromal fibrosis.

Given the clinical and dermoscopic findings, a biopsy was performed, confirming the diagnosis of KHE. Histopathology revealed a dense proliferation of spindle-shaped endothelial cells arranged in nodules with slit-like vascular lumina. The surrounding stroma exhibited areas of fibrosis and hemosiderin deposition, consistent with the obliterative and infiltrative nature of the tumor. Immunohistochemical staining showed strong positivity for CD31 and CD34, while GLUT1 was negative, ruling out the diagnosis of infantile hemangioma.<sup>3</sup> These histopathological findings correlated well with the dermoscopic features, where the grayish-bluish background likely reflected the dense endothelial proliferation and stromal thickening, while the fine white filaments corresponded to areas of stromal fibrosis.

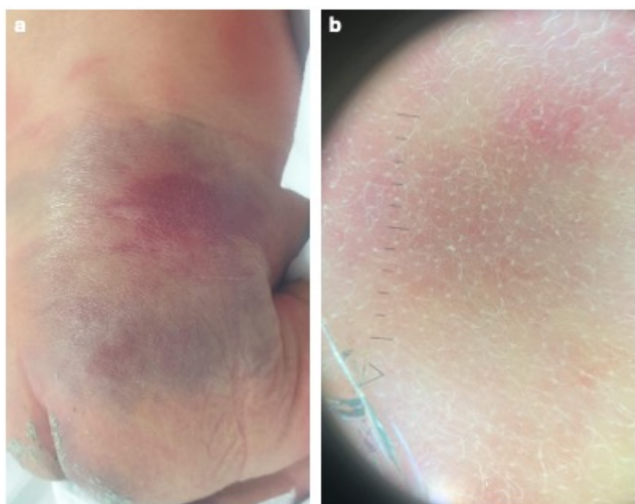
### Discussion

Dermoscopy is an established tool for evaluating vascular lesions, but its application in KHE remains underexplored. In this case, the most striking dermoscopic feature was the uniform grayish-bluish background, which differed from the bright red, reticular, or globular patterns seen in hemangiomas. The lack of visible vessels and the presence of fine white filamentous structures further supported the obliterative and fibrotic characteristics of KHE. Unlike venous malformations, which typically present with well-

demarcated lacunae, KHE exhibited a homogeneous pattern with no discrete vascular elements. This dermoscopic appearance aligns with the histopathological findings of vessel compression and endothelial proliferation, suggesting that dermoscopy may serve as a useful adjunctive tool in the early identification of KHE.<sup>2,4</sup>

As highlighted in a recent review, the dermoscopic features of KHE remain poorly described, with most data limited to isolated case reports or anecdotal observations.<sup>5</sup>

Recognizing the dermoscopic features of KHE is clinically relevant, as it aids in distinguishing this aggressive vascular tumor from benign infantile hemangiomas, which often exhibit well-structured lobular or reticular vascular patterns. The early identification of KHE is crucial, given its potential association with the Kasabach-Merritt phenomenon, which requires urgent medical intervention.<sup>1,3</sup> While histopathology remains the gold standard for diagnosis, dermoscopic findings such as a homogeneous grayish-bluish background, absence of well-formed vessels, and fine white filaments may provide early diagnostic clues, prompting further investigations and timely management.<sup>4</sup>



**Figure 1.** a) Clinical image of the large, firm, and violaceous plaque involving the lumbar and right gluteal region; b) dermoscopic image showing a uniform grayish-bluish background covering the entire lesion.

## Conclusions

This case highlights the distinctive dermoscopic features of KHE, characterized by a homogeneous grayish-bluish background, absence of visible vascular structures, and the presence of fine white filamentous patterns. These findings reflect the histopathological characteristics of the tumor, including dense endothelial proliferation, vessel obliteration, and stromal fibrosis. Although dermoscopy is not a substitute for histopathology, it may play a valuable role in the early differentiation of KHE from other vascular lesions, guiding clinical decision-making and facilitating prompt intervention. Further studies are needed to establish standardized dermoscopic criteria for KHE and explore its potential role in monitoring disease progression and treatment response.<sup>3</sup>

## References

1. Zhao Y, Cheng J. Medical and interventional therapy of Kasabach-Merritt phenomenon associated with Kaposiform hemangioendothelioma: A case report. *J Interv Med* 2023;6:130-3.
2. Wang Z, Yan H, Ma Y, et al. Case Report: Kaposiform hemangioendothelioma with PIK3CA mutation successfully treated with sirolimus. *Front Oncol* 2023;13:1132702.
3. Zhou J, Qiu T, Zhang Z, et al. Consensus statement for the diagnosis, treatment, and prognosis of kaposiform hemangioendothelioma. *Int J Cancer* 2025;156:1986-94.
4. Li M, Wang X, Kieran R, et al. Treatment experience for different risk groups of Kaposiform hemangioendothelioma. *Front Oncol* 2024;14:1336763.
5. Natsis NE, Gordon SC, Kaushik A, Seiverling EV. A practical review of dermoscopy for pediatric dermatology, part II: Vascular tumors, infections, and inflammatory dermatoses. *Pediatr Dermatol* 2020;37:798-803.

Received: 18 March 2025; Accepted: 30 June 2025.

Conflict of interest: the authors declare no potential conflict of interest.

Ethics approval and consent to participate: no ethical committee approval was required for this case report by the Department, because this article does not contain any studies with human participants or animals. Informed consent was obtained from the patient's legally authorized representatives.

Consent for publication: written informed consent was obtained from legally authorized representatives for anonymized patient information to be published in this article.

Availability of data and materials: all data underlying the findings are fully available.

*Publisher's note: all claims expressed in this article are solely those of the authors and do not necessarily represent those of their affiliated organizations, or those of the publisher, the editors and the reviewers. Any product that may be evaluated in this article or claim that may be made by its manufacturer is not guaranteed or endorsed by the publisher.*

This work is licensed under a Creative Commons Attribution-NonCommercial 4.0 International License (CC BY-NC 4.0).